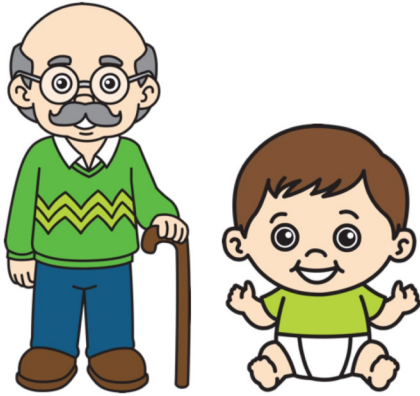
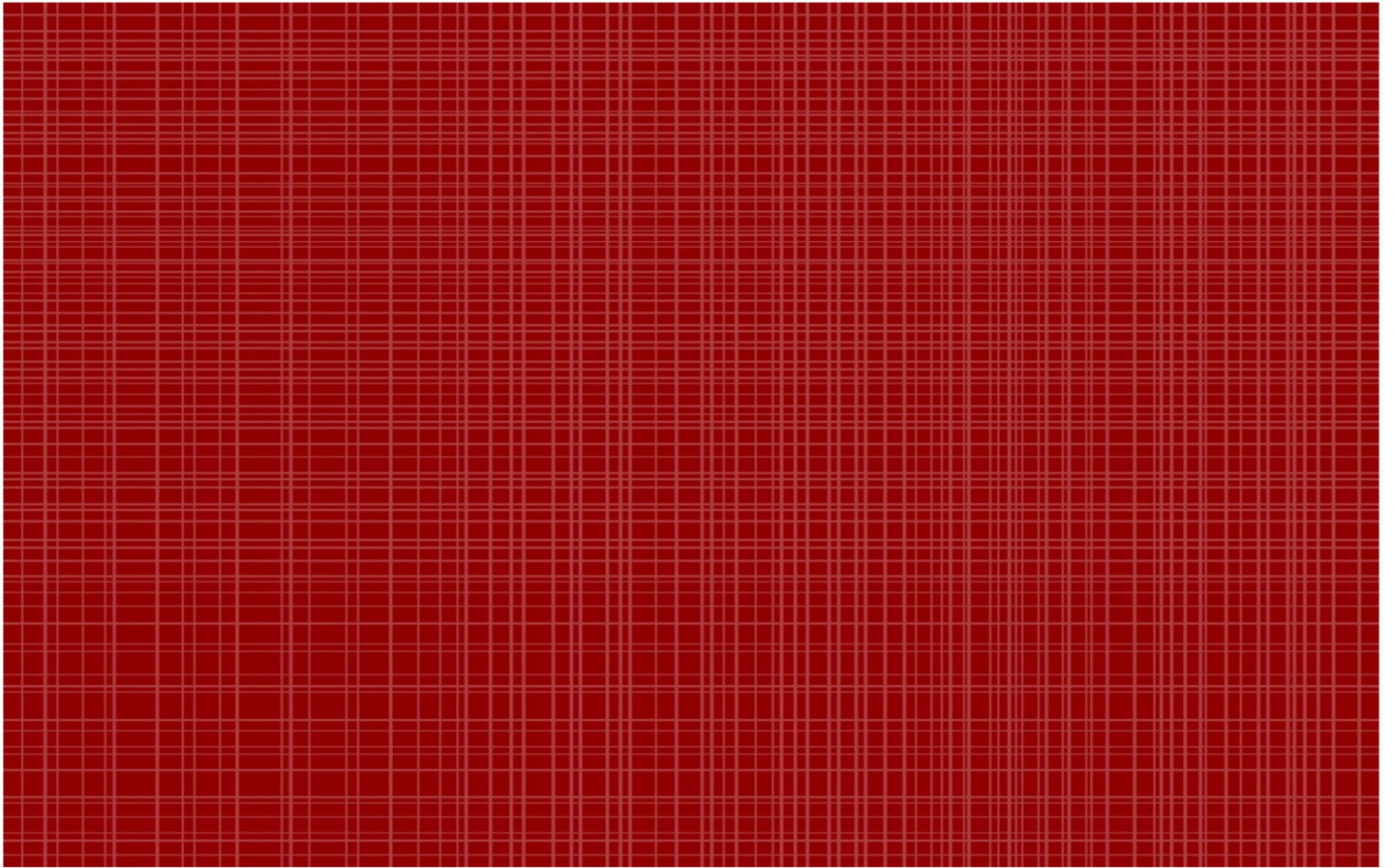
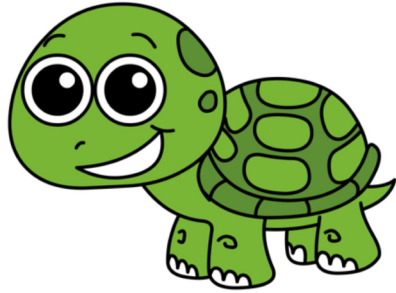


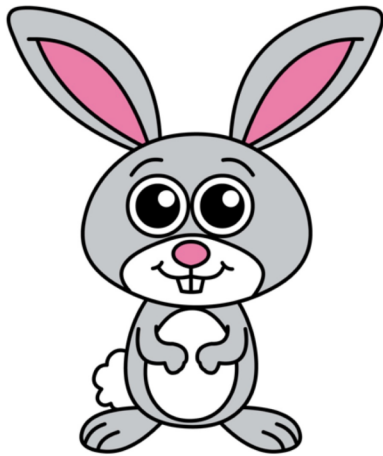
OPPOSITE







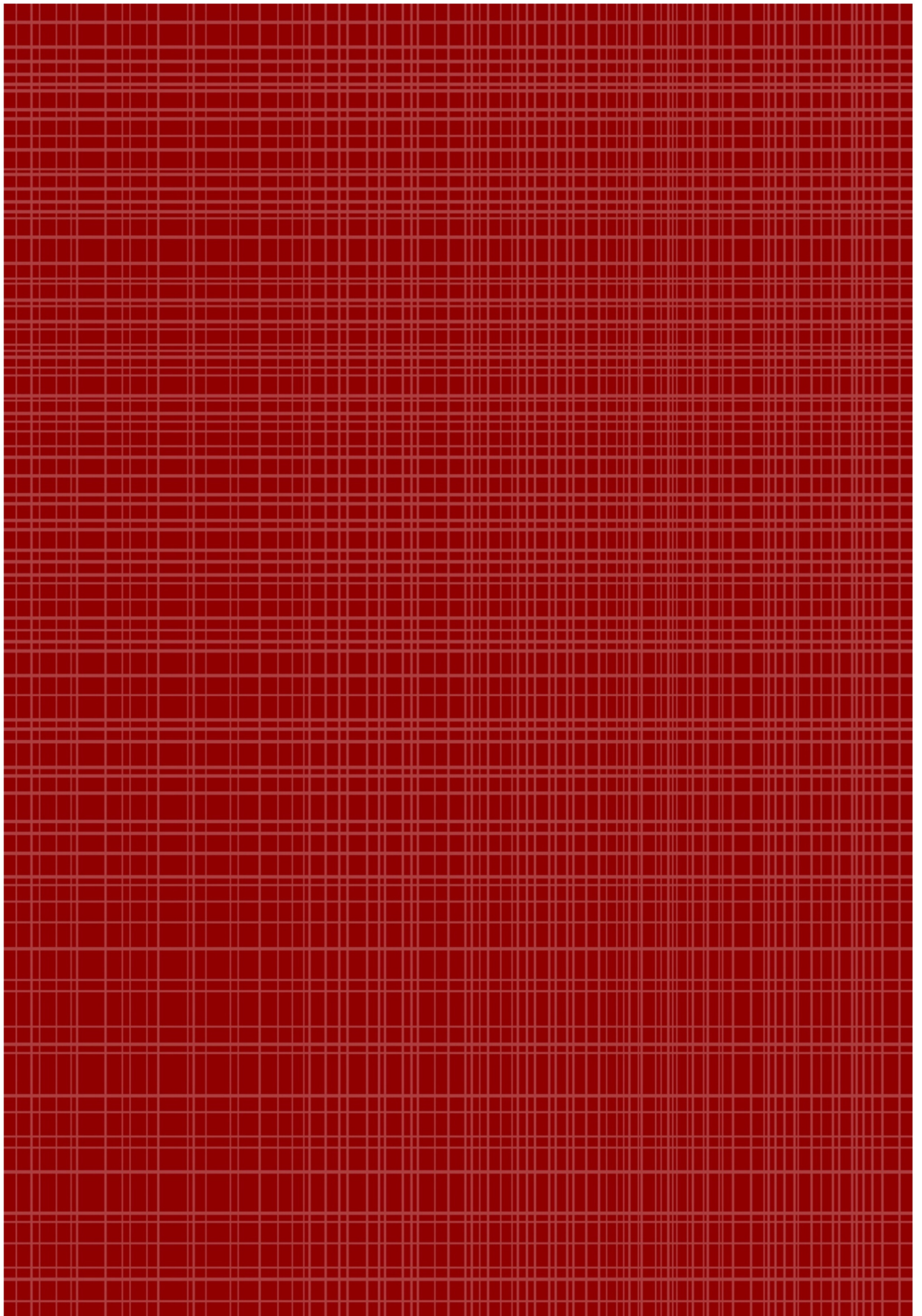
slow



fast



young





old



day



night



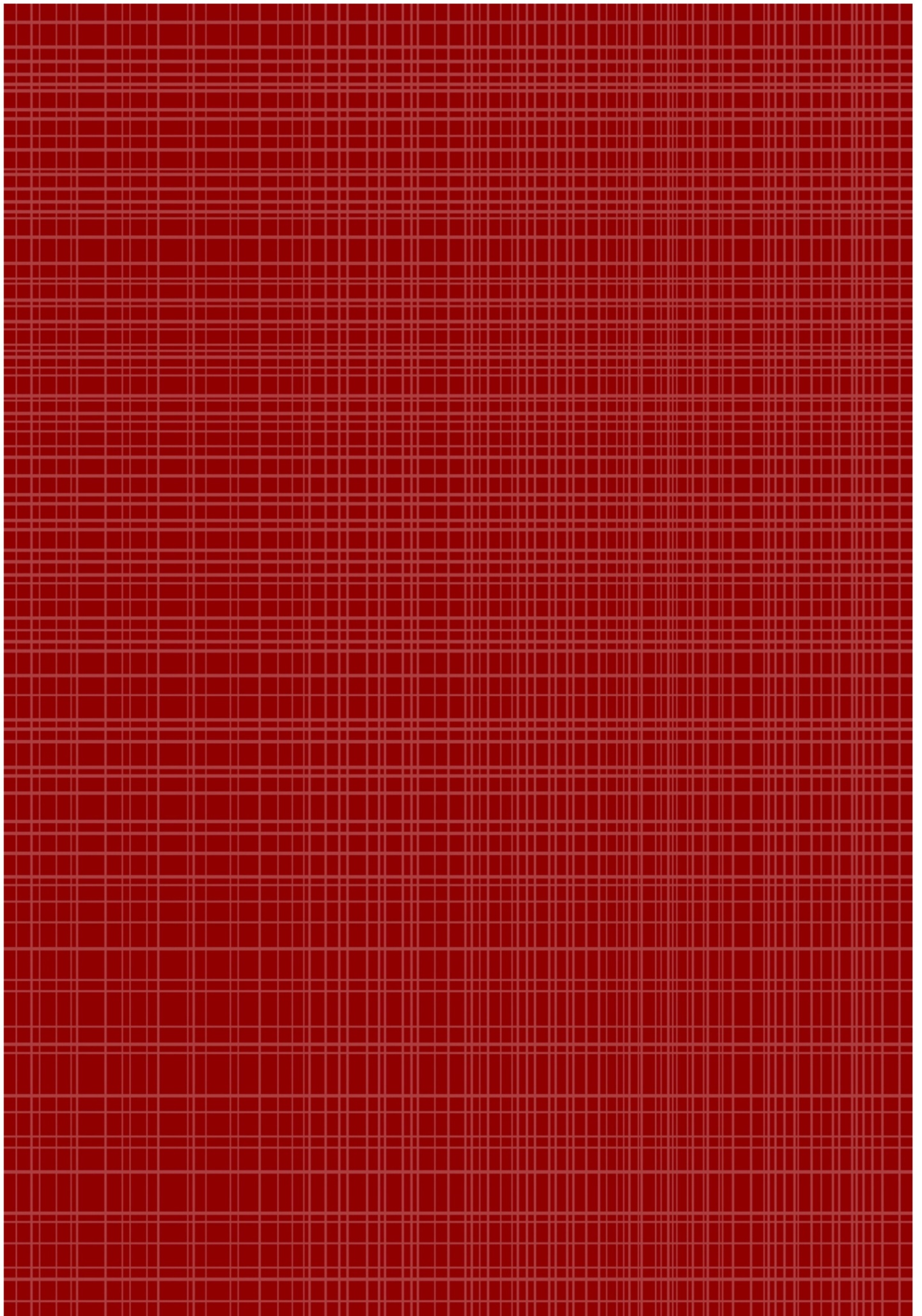
cold

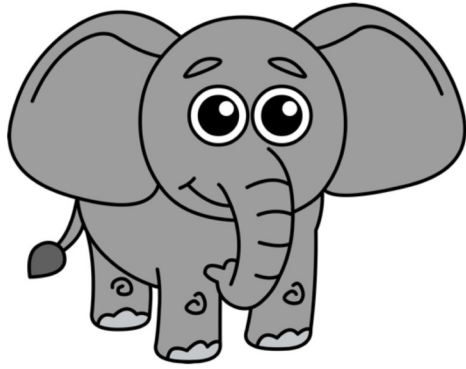


hot



small





big



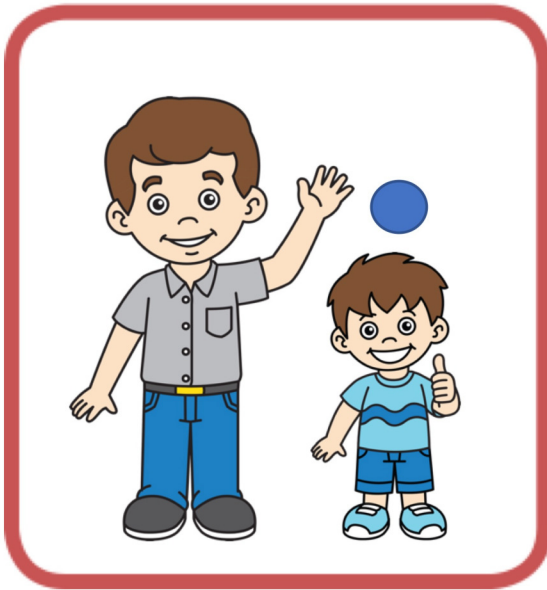
sad



happy



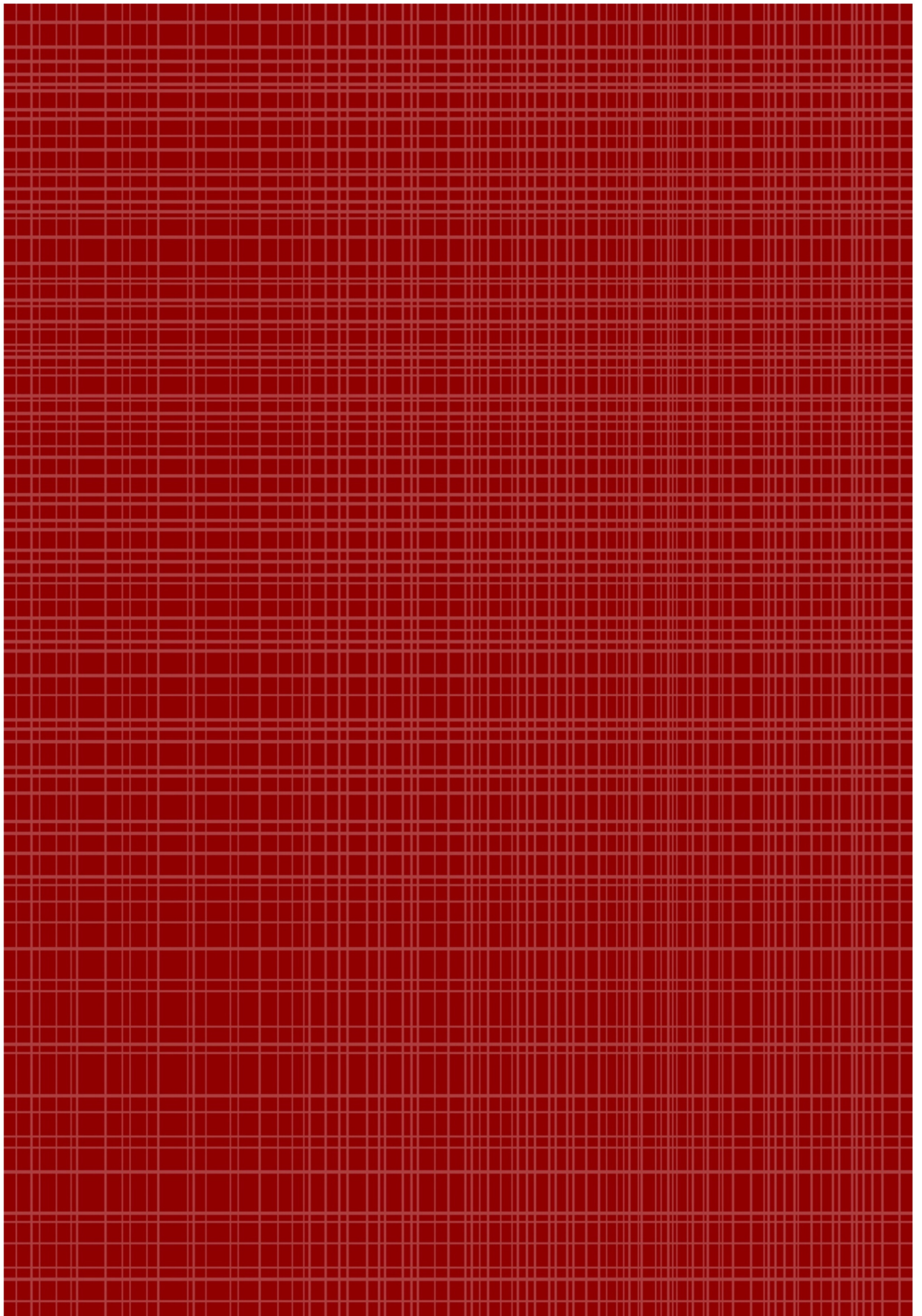
tall



short



clean

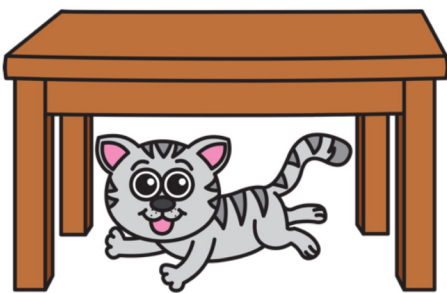




dirty



above



below

the fact that the *Journal of Applied Behavior Analysis* is the most widely read journal in the field of behavior analysis.

The *Journal of Applied Behavior Analysis* is a peer-reviewed journal that publishes research articles, reviews, and book reviews in the field of behavior analysis.

The journal is published by the Society for Applied Behavior Analysis (SABA) and is available online through the journal's website.

The journal is a leading source of information for researchers and practitioners in the field of behavior analysis.

The journal is a must-read for anyone interested in the field of behavior analysis.

The journal is a valuable resource for researchers and practitioners in the field of behavior analysis.

The journal is a leading source of information for researchers and practitioners in the field of behavior analysis.

The journal is a must-read for anyone interested in the field of behavior analysis.

The journal is a valuable resource for researchers and practitioners in the field of behavior analysis.

The journal is a leading source of information for researchers and practitioners in the field of behavior analysis.

The journal is a must-read for anyone interested in the field of behavior analysis.

The journal is a valuable resource for researchers and practitioners in the field of behavior analysis.

The journal is a leading source of information for researchers and practitioners in the field of behavior analysis.

The journal is a must-read for anyone interested in the field of behavior analysis.

The journal is a valuable resource for researchers and practitioners in the field of behavior analysis.

The journal is a leading source of information for researchers and practitioners in the field of behavior analysis.

The journal is a must-read for anyone interested in the field of behavior analysis.

The journal is a valuable resource for researchers and practitioners in the field of behavior analysis.

The journal is a leading source of information for researchers and practitioners in the field of behavior analysis.

The journal is a must-read for anyone interested in the field of behavior analysis.

The journal is a valuable resource for researchers and practitioners in the field of behavior analysis.

The journal is a leading source of information for researchers and practitioners in the field of behavior analysis.

The journal is a must-read for anyone interested in the field of behavior analysis.

The journal is a valuable resource for researchers and practitioners in the field of behavior analysis.



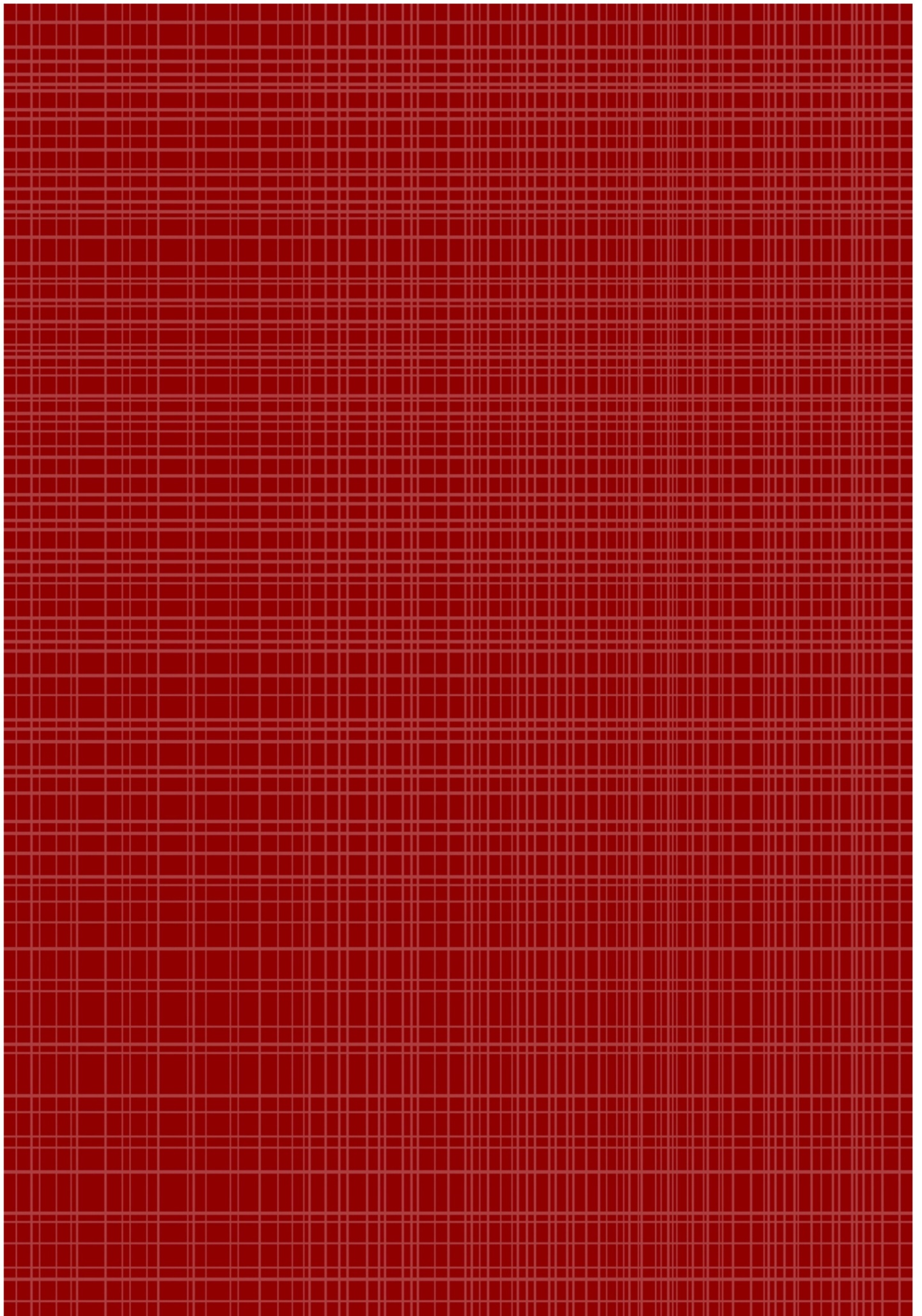
up



down



closed





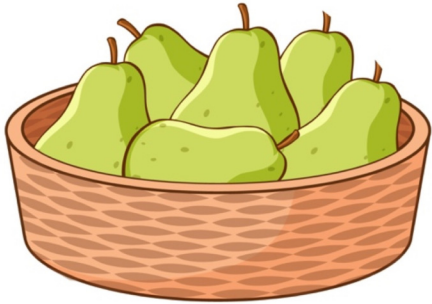
open



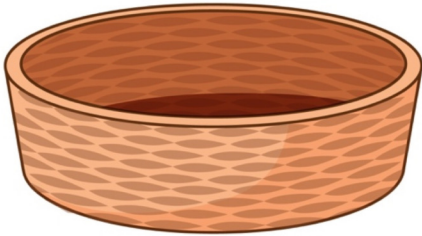
inside



outside



full



empty



wet



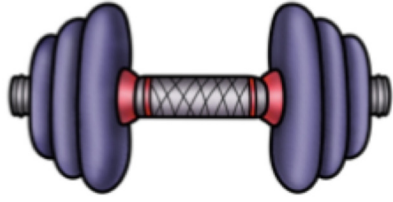
dry



soft



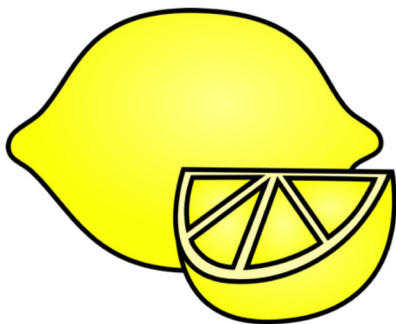
hard



heavy



light



sour

the first two cases, the \mathbb{Z}_2 symmetry is broken spontaneously, and the ground state is a superposition of the two states.

In the third case, the \mathbb{Z}_2 symmetry is broken explicitly, and the ground state is a single state.

The ground state of the system is a superposition of the two states, and the system is in a state of \mathbb{Z}_2 symmetry breaking.

The ground state of the system is a single state, and the system is in a state of \mathbb{Z}_2 symmetry breaking.

The ground state of the system is a superposition of the two states, and the system is in a state of \mathbb{Z}_2 symmetry breaking.

The ground state of the system is a single state, and the system is in a state of \mathbb{Z}_2 symmetry breaking.

The ground state of the system is a superposition of the two states, and the system is in a state of \mathbb{Z}_2 symmetry breaking.

The ground state of the system is a single state, and the system is in a state of \mathbb{Z}_2 symmetry breaking.

The ground state of the system is a superposition of the two states, and the system is in a state of \mathbb{Z}_2 symmetry breaking.

The ground state of the system is a single state, and the system is in a state of \mathbb{Z}_2 symmetry breaking.

The ground state of the system is a superposition of the two states, and the system is in a state of \mathbb{Z}_2 symmetry breaking.

The ground state of the system is a single state, and the system is in a state of \mathbb{Z}_2 symmetry breaking.

The ground state of the system is a superposition of the two states, and the system is in a state of \mathbb{Z}_2 symmetry breaking.

The ground state of the system is a single state, and the system is in a state of \mathbb{Z}_2 symmetry breaking.

The ground state of the system is a superposition of the two states, and the system is in a state of \mathbb{Z}_2 symmetry breaking.

The ground state of the system is a single state, and the system is in a state of \mathbb{Z}_2 symmetry breaking.

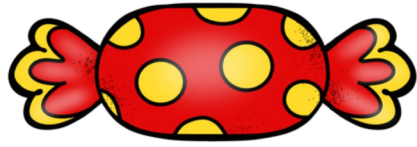
The ground state of the system is a superposition of the two states, and the system is in a state of \mathbb{Z}_2 symmetry breaking.

The ground state of the system is a single state, and the system is in a state of \mathbb{Z}_2 symmetry breaking.

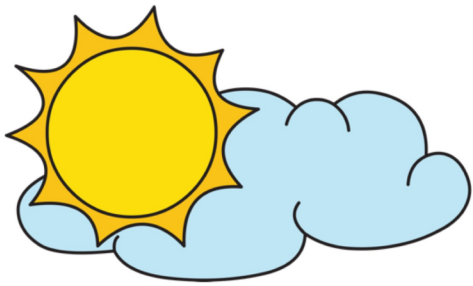
The ground state of the system is a superposition of the two states, and the system is in a state of \mathbb{Z}_2 symmetry breaking.

The ground state of the system is a single state, and the system is in a state of \mathbb{Z}_2 symmetry breaking.

The ground state of the system is a superposition of the two states, and the system is in a state of \mathbb{Z}_2 symmetry breaking.



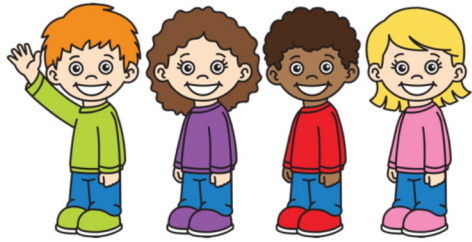
sweet



front



behind



first



last



under

The first part of the document discusses the importance of maintaining accurate records of all transactions. This includes not only sales and purchases but also the various expenses incurred in the course of the business. It is essential to ensure that every receipt is properly filed and that the books are kept up to date.

In addition, it is important to maintain a clear and concise record of the company's assets and liabilities. This will help to ensure that the company's financial position is always accurately reflected in the books.

The second part of the document deals with the various methods of accounting. It discusses the different types of accounts that should be maintained and the various methods of recording transactions. It also covers the various methods of summarizing the accounts and the different ways in which the results can be presented.

Finally, the document discusses the various methods of auditing the books. It covers the different types of audits that can be conducted and the various methods of checking the accuracy of the records. It also discusses the various methods of preventing fraud and the different ways in which the company's assets can be protected.



over



on



off

the fact that the *Journal of Applied Behavior Analysis* is the most widely read journal in the field of behavior analysis.

The *Journal of Applied Behavior Analysis* is a peer-reviewed journal that publishes research articles, reviews, and book reviews in the field of behavior analysis.

The journal is published by the American Psychological Association and is available online through the APA PsycInfo database.

The journal is a leading source of information for researchers and practitioners in the field of behavior analysis.

The journal is a key resource for anyone interested in the latest research and developments in behavior analysis.

The journal is a valuable tool for staying up-to-date on the latest research and findings in the field of behavior analysis.

The journal is a must-read for anyone who is serious about understanding the science of behavior.

The journal is a critical component of any library or collection of resources in the field of behavior analysis.

The journal is a key resource for anyone who is interested in the application of behavior analysis to real-world problems.

The journal is a leading source of information for researchers and practitioners in the field of behavior analysis.

The journal is a key resource for anyone interested in the latest research and developments in behavior analysis.

The journal is a valuable tool for staying up-to-date on the latest research and findings in the field of behavior analysis.

The journal is a must-read for anyone who is serious about understanding the science of behavior.

The journal is a critical component of any library or collection of resources in the field of behavior analysis.

The journal is a key resource for anyone who is interested in the application of behavior analysis to real-world problems.

The journal is a leading source of information for researchers and practitioners in the field of behavior analysis.

The journal is a key resource for anyone interested in the latest research and developments in behavior analysis.

The journal is a valuable tool for staying up-to-date on the latest research and findings in the field of behavior analysis.

The journal is a must-read for anyone who is serious about understanding the science of behavior.

The journal is a critical component of any library or collection of resources in the field of behavior analysis.

The journal is a key resource for anyone who is interested in the application of behavior analysis to real-world problems.

The journal is a leading source of information for researchers and practitioners in the field of behavior analysis.

The journal is a key resource for anyone interested in the latest research and developments in behavior analysis.

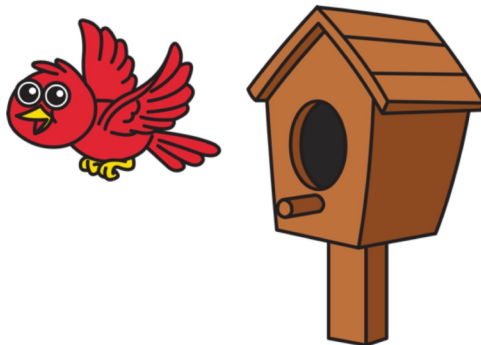
The journal is a valuable tool for staying up-to-date on the latest research and findings in the field of behavior analysis.



left



right



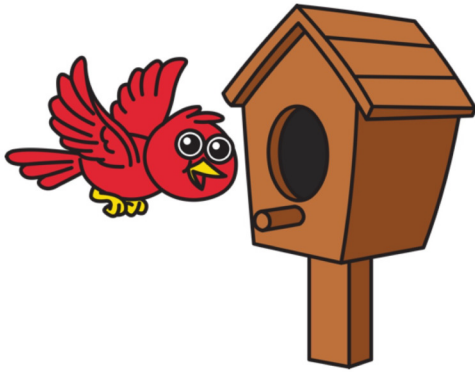
away

The first part of the paper discusses the importance of maintaining accurate records in a laboratory setting. It highlights the various methods used for data collection and storage, emphasizing the need for consistency and reliability. The authors also address the challenges associated with data management, such as ensuring data integrity and security.

In the second section, the authors explore the role of technology in modern laboratories. They discuss how digital tools and software have revolutionized data analysis and reporting, allowing for more efficient and accurate results. The text also touches upon the importance of training staff to use these technologies effectively.

The third part of the paper focuses on the ethical considerations of laboratory research. It discusses the need for transparency and accountability in the reporting of results, as well as the importance of protecting sensitive information. The authors also mention the role of regulatory bodies in ensuring that laboratory practices adhere to established standards.

Finally, the paper concludes by looking towards the future of laboratory science. It discusses emerging trends such as automation and artificial intelligence, and how these technologies will continue to shape the way laboratories operate. The authors express optimism about the potential for these advancements to lead to new discoveries and improved laboratory efficiency.



towards

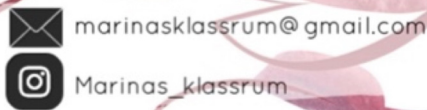


cry



laugh

MARINAS KLASSRUM



Tack för att du har laddat ner mitt material.

- Det är tillåtet att använda mitt material för privat bruk och enskilda klassuppsättningar.
- Vill du dela med dig av materialet till kollegor ber jag dig att hänvisa till min sida på skolmagi.se
- Inspireras av materialet men du får inte bearbeta eller ändra i materialet.
- Du får inte använda materialet eller bilderna för att sälja det vidare.

Hoppas att du får användning av detta i din undervisning.

Bilderna har jag köpt från

