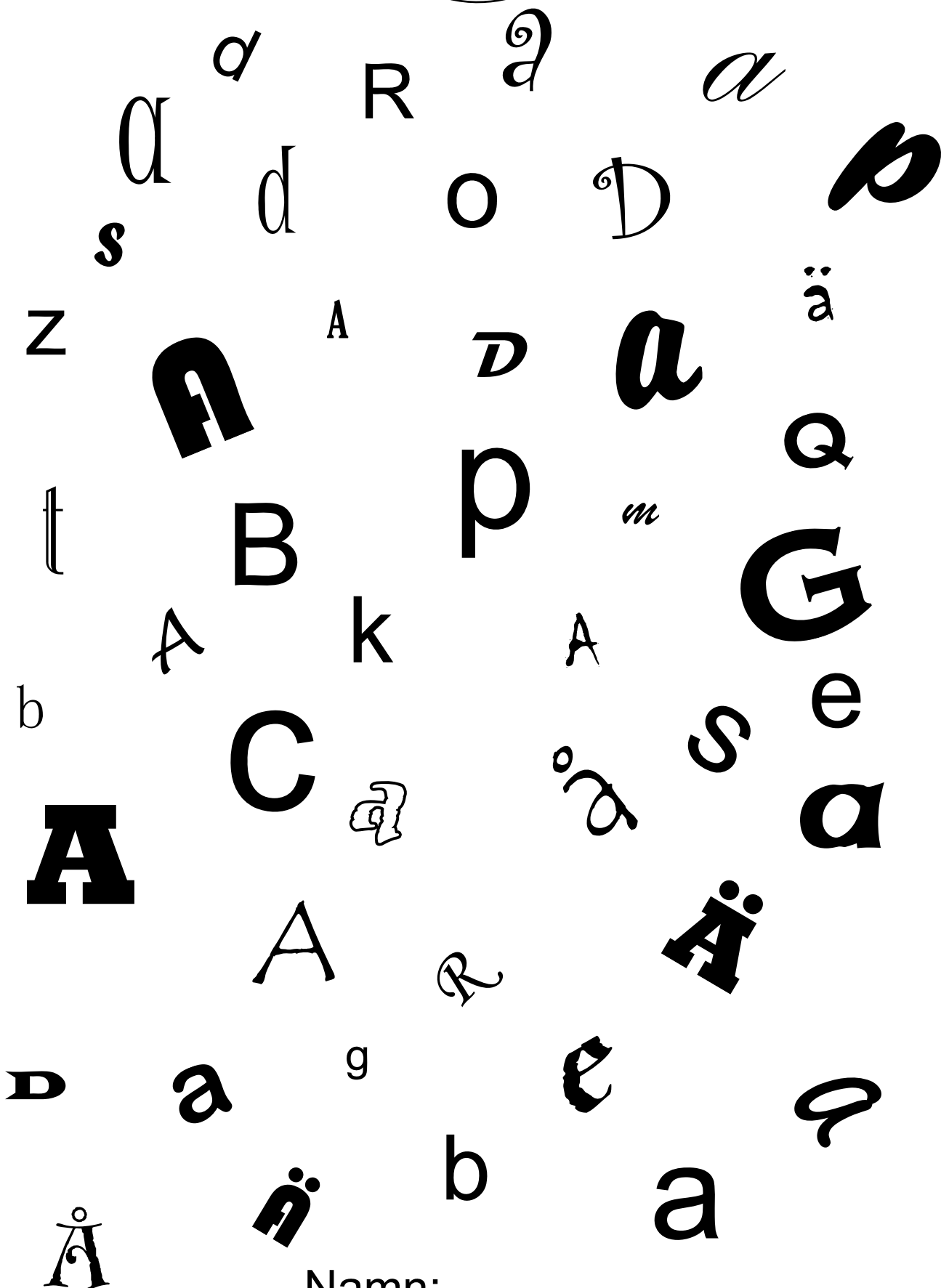


Sök bokstaven!

Aaa

15 st

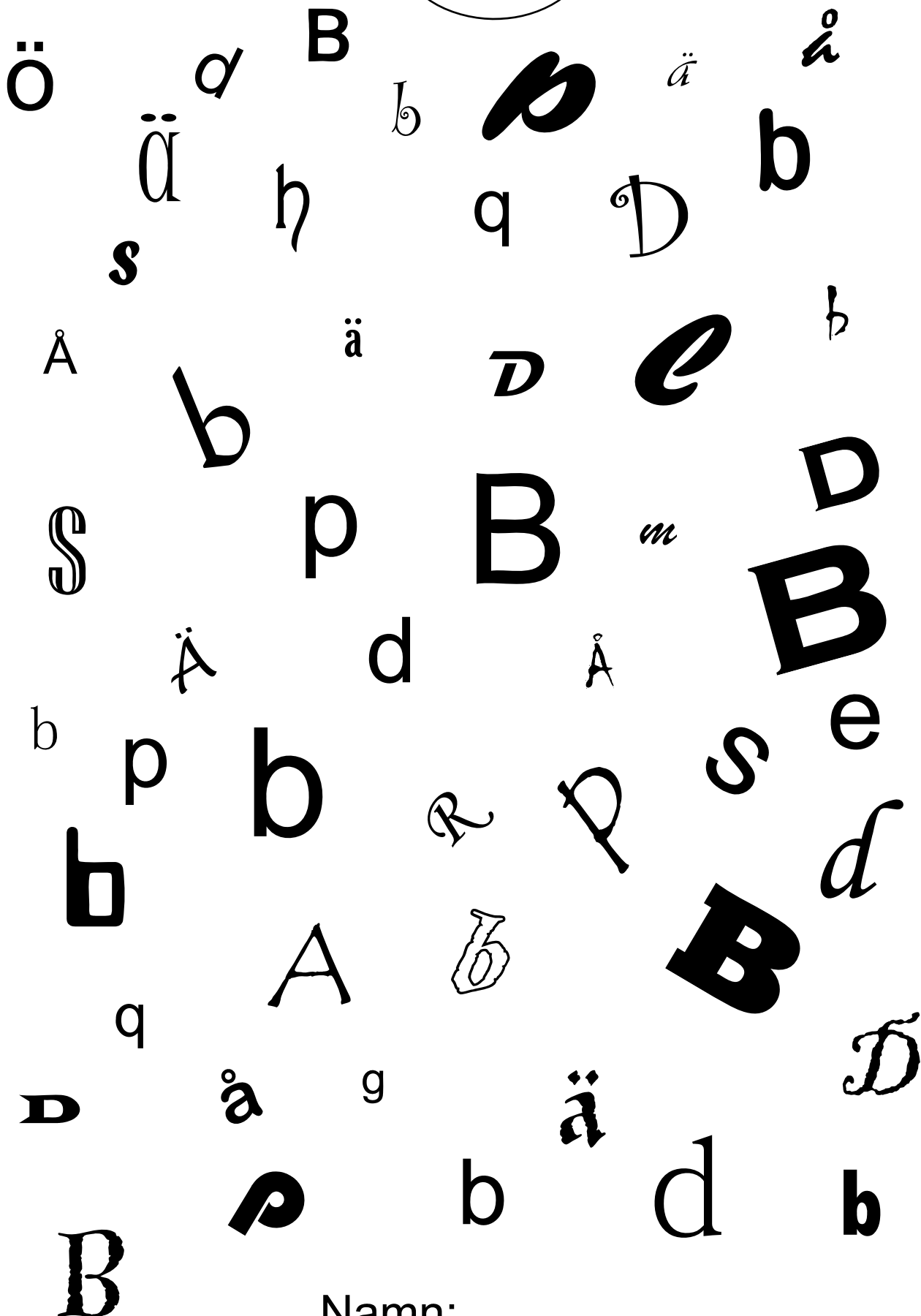


Namn: _____

Sök bokstaven!

Bb

15 st



Namn: _____

Sök bokstaven!

Cc

15 st

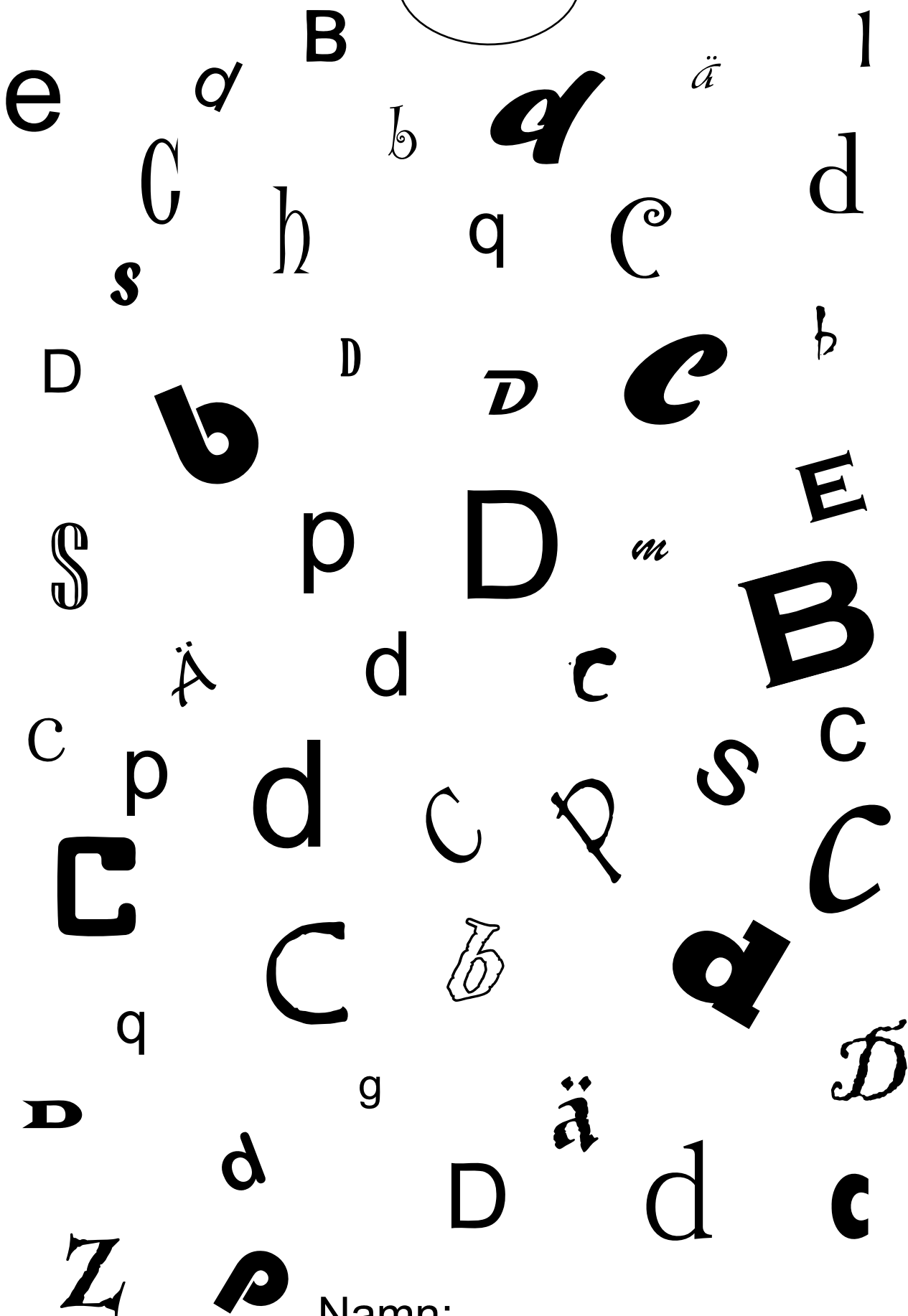
e d B b c ä c
C h q C
s h q C
A ä D c b
S p B m E
c p C d c s B
C p C C p s C
q C b C c
D q g ä d D
Z å P e ä d c

Namn: _____

Sök bokstaven!

Dd

15 st



Namn: _____

Sök bokstaven!

Ee

15 st

h R E b N
H ä
s e h q f e
n e R h n
m q e m
c r H p N
e b z e s h
h E h
n h
E h
D h r E p n
e

Namn: _____

Sök bokstaven!

Ff

15 st

F R E F N
e h q C f
n e R O n
F q F g F
c r H p N
e b z f s h
f n E h f f
f n h E f F
D h r E f n
F

Namn: _____

Sök bokstaven!

Ggg

15 st

A collection of 15 letters 'G' and 'g' in various fonts and orientations scattered across the page. The letters include: a large 'G' in a serif font at the top center; a 'G' in a blackletter font at the top right; a 'G' in a serif font at the top right; a 'G' in a blackletter font at the top right; a 'G' in a serif font at the top right; a 'G' in a blackletter font at the top right; a 'G' in a serif font at the top right; a 'G' in a blackletter font at the top right; a 'G' in a serif font at the top right; a 'G' in a blackletter font at the top right; a 'G' in a serif font at the top right; a 'G' in a blackletter font at the top right; a 'G' in a serif font at the top right; a 'G' in a blackletter font at the top right; a 'G' in a serif font at the top right.

Namn: _____

Sök bokstaven!

Hh

15 st

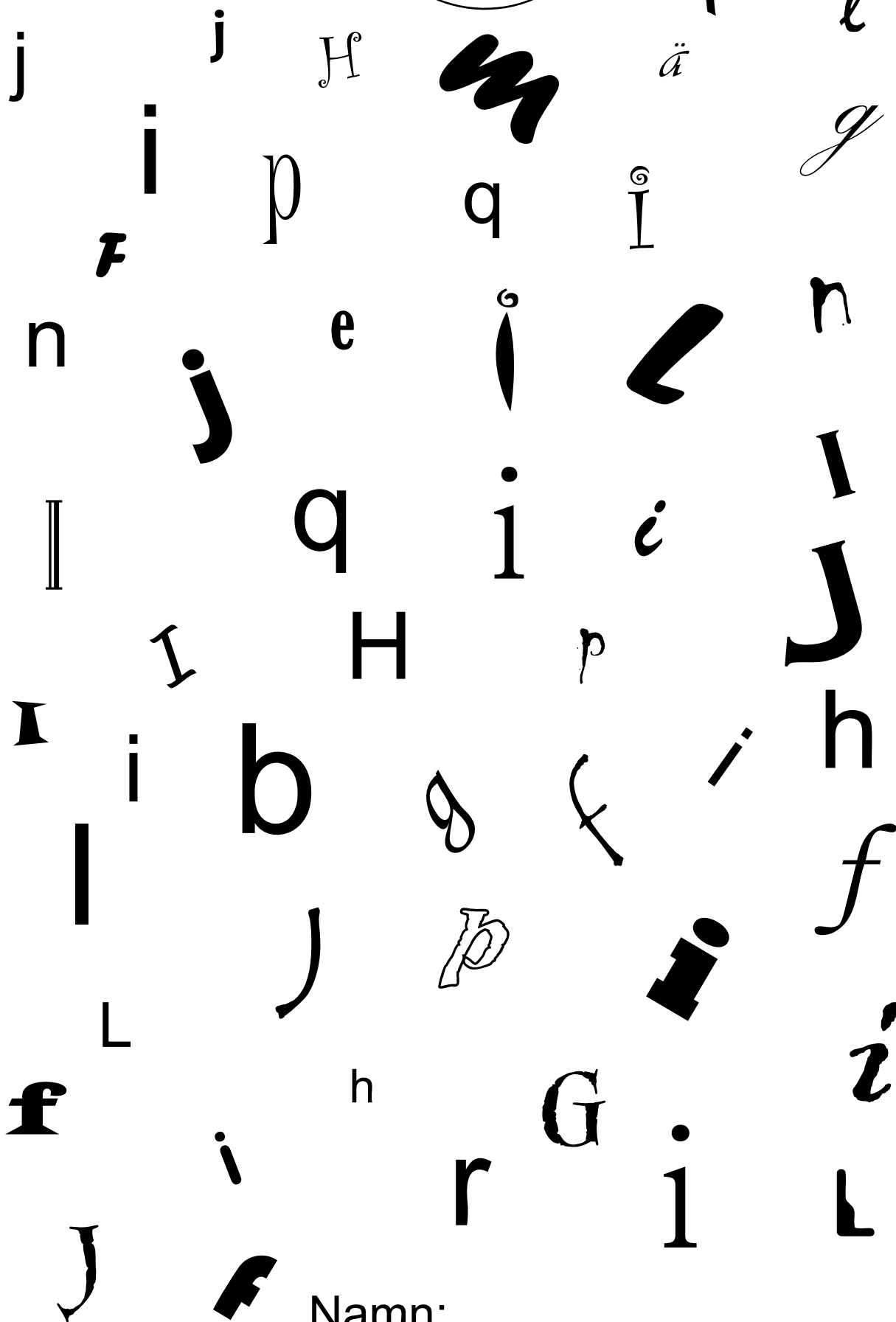
h R N N
h ä
s h q C h
n m R h n
m q h m E
c r H p N
p b z H s h
H r H s h
n r h q D
r q p n
D h

Namn: _____

Sök bokstaven!

Ii

15 st

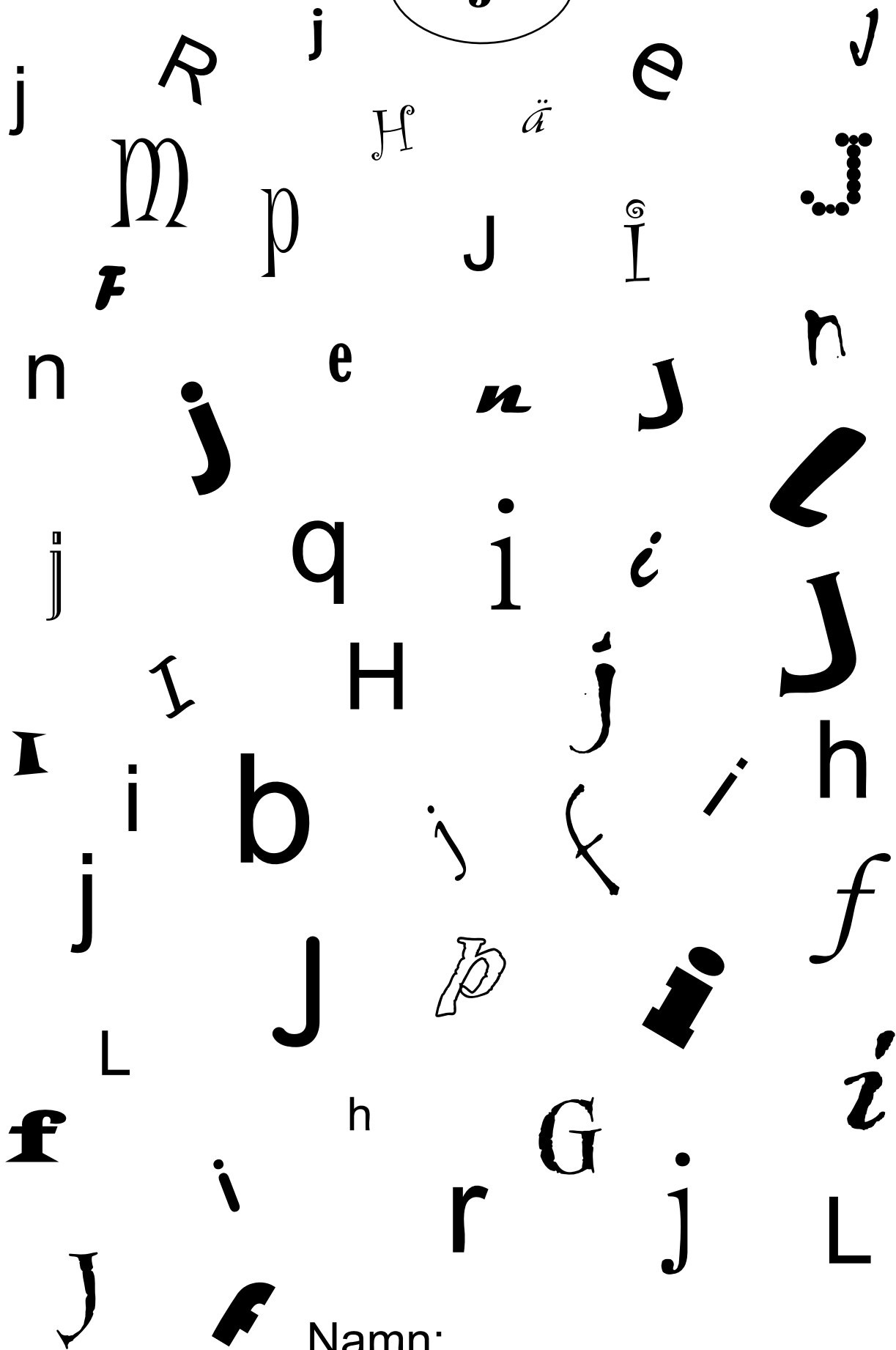


Namn: _____

Sök bokstaven!

Jj

15 st



Namn: _____

Sök bokstaven!

Kk

15 st

O a B ä k
k h q C a
s h q C a
Å K K D K k
k p B a K
a d c K
c p O C k o c
k q C k o C
D q o ä K
k e ä d c
K P

Namn: _____

Sök bokstaven!

Nn

15 st

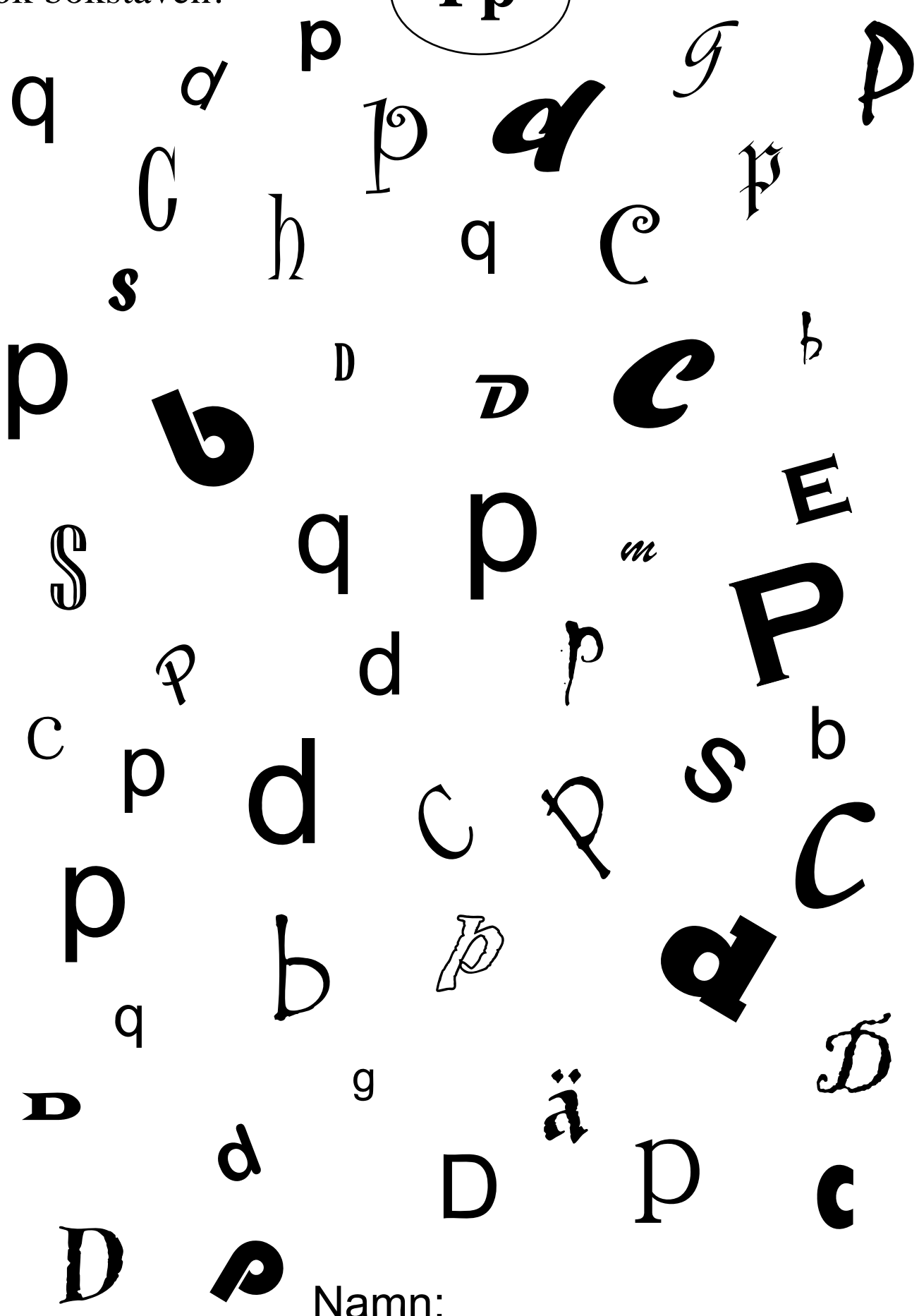
h R N d N
h R N p b
s H q C n
n m R h m
m q h m E
c r N p
p b z B s h
n r N r K h
r n q D
R r q p n
D h

Namn: _____

Sök bokstaven!

Pp

15 st



Namn: _____

Sök bokstaven!

15 st

Qq

q q q q r S
C h q C ä
s h q C
p p D Q c b
b
q p m E
c q d p Q
P q d C Q s b
q q q b q
D q g q D
D d D Q c
D Q

Namn: _____

Sök bokstaven!

Rr

15 st

q R q q
p ä q R
r h q C q
s h q C q
p D R r b
b D R r b
r q h m E
c r d p
p d C B s b
R d r b h
q r p
r n q D
R r q p c
D r

Namn: _____

Sök bokstaven!

Ss

15 st

A collection of 15 letters in various fonts and orientations, including uppercase 'S', lowercase 's', and stylized variations. The letters are scattered across the page, with some appearing in different styles like script, bold, or outlined. The letters include: S, W, S, S, S, U, W, g, S, V, ä, S, U, W, F, S, U, W, w, e, w, S, l, w, S, U, S, u, Z, %, U, S, U, S, S, i, b, g, W, i, S, U, S, s, U, g, W, i, S, u, u, w, s, i, S, V, M, N, S, V, S.

Namn: _____

Sök bokstaven!

Tt

15 st

A collection of various letters and symbols scattered across the page. The letters include uppercase and lowercase versions of F, R, E, T, N, S, H, B, D, and others. Some letters are in different fonts (serif, sans-serif, script) or are stylized (e.g., a hand-drawn 't', a dotted 'F', a shadowed 'F'). There are also some symbols like a dagger (†) and a cross (†).

Namn: _____

Sök bokstaven!

Uu

15 st

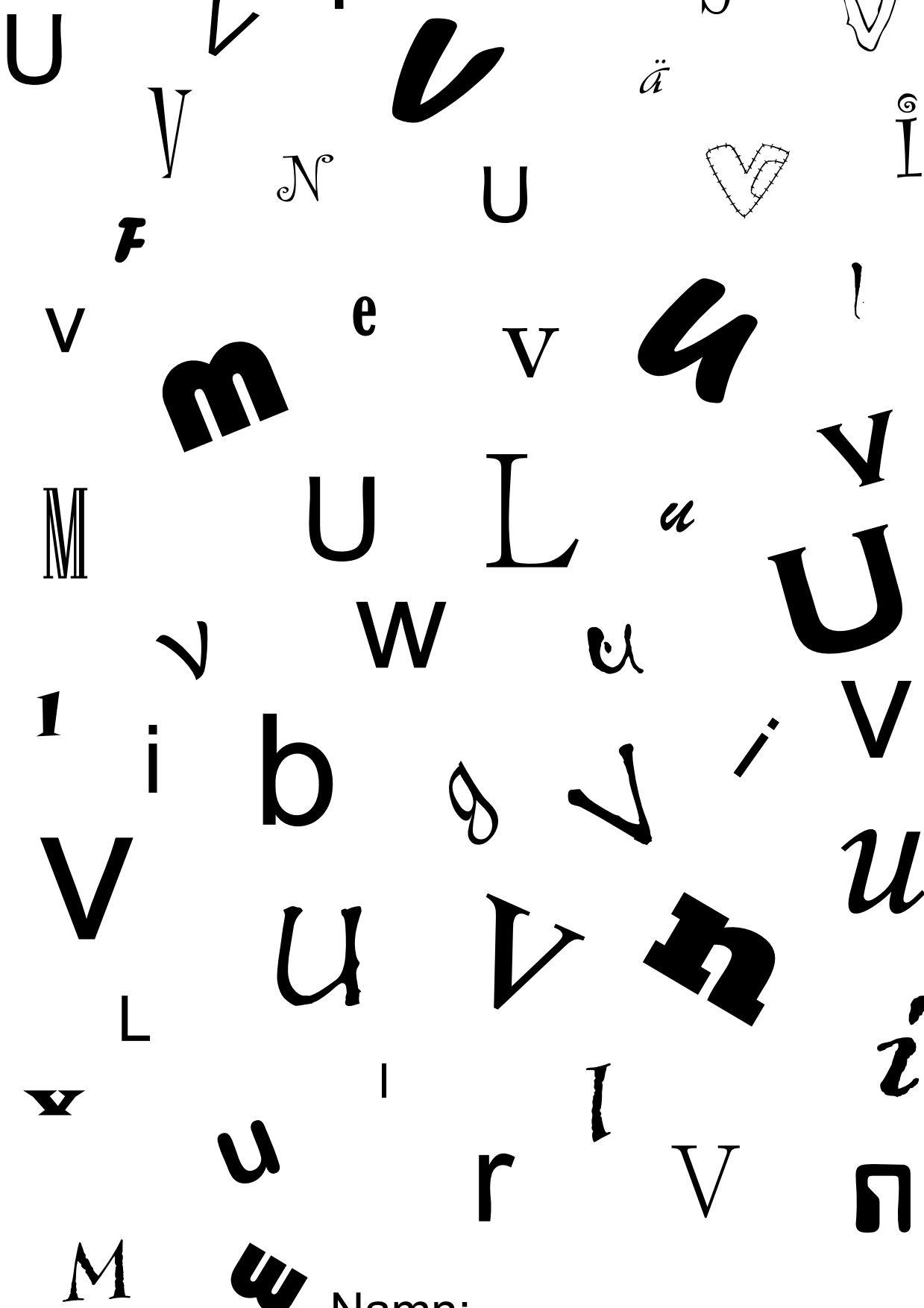
U M I V
M t
M U i n
F U i
n e m U l
M U L a U
u u u a h
I i b g m i
U u m i
f L U m h
u i r U n
M /

Namn: _____

Sök bokstaven!

Vv

15 st



Namn: _____

Sök bokstaven!

Ww

15 st

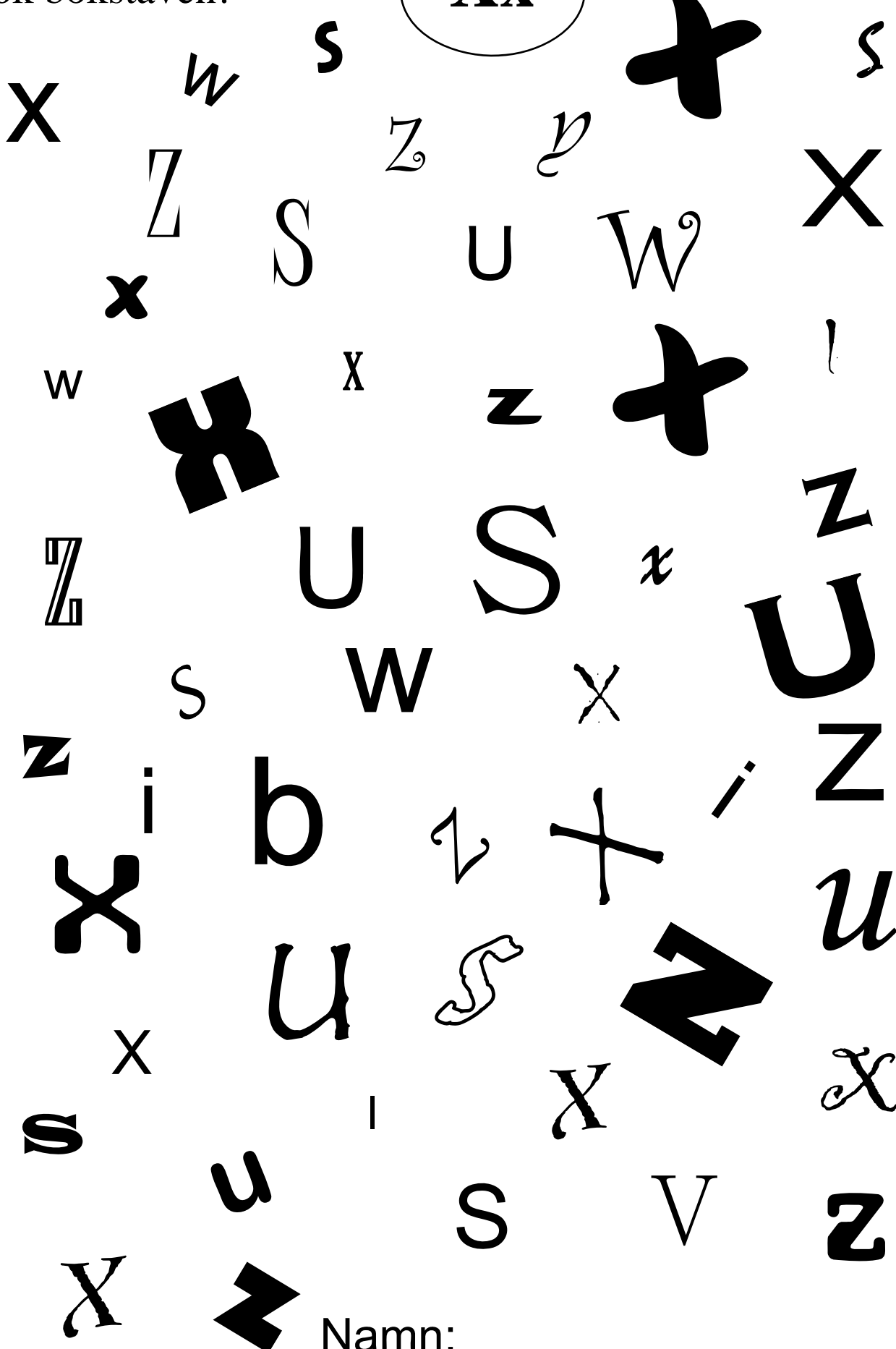
U w l v m n
V O W u w
F e ä w 4 l
w M U W u V
v w U
I i b g W i w
U u
w h u
v u l V w
M W

Namn: _____

Sök bokstaven!

Xx

15 st



Namn: _____

Sök bokstaven!

Yy

15 st

A collection of various letters and symbols scattered across the page for a search activity. The letters include uppercase and lowercase versions of X, Y, Z, U, S, W, and a, along with a plus sign and a question mark. The letters are in different fonts, sizes, and orientations. One instance of 'Yy' is circled at the top. At the bottom right, there is a line for a name: "Namn: _____".

